



## Model: CT-01

CT-01 is a pull-up style tub with a round inflatable tube on top and six plastic round tubes of 1.5mm thickness, which can provide good support for the tub and make it present a perfect and beautiful round shape.

Our tub cover thickness is 0.45mm, the bathtub body is made of 3mm pearl cotton compound aluminum film and PVC laminated cloth (210D nylon oxford cloth pasted with 0.25mm PVC, the total thickness is 0.35mm) combination, the bathtub insulation effect is greatly improved.

We are also equipped with a water outlet, easy to drain the water after the bath, making the bath more simple. It come with hand pump and textbook pump, so you pump more convenient, but also with a customizable logo storage bag, more convenient storage and carry.



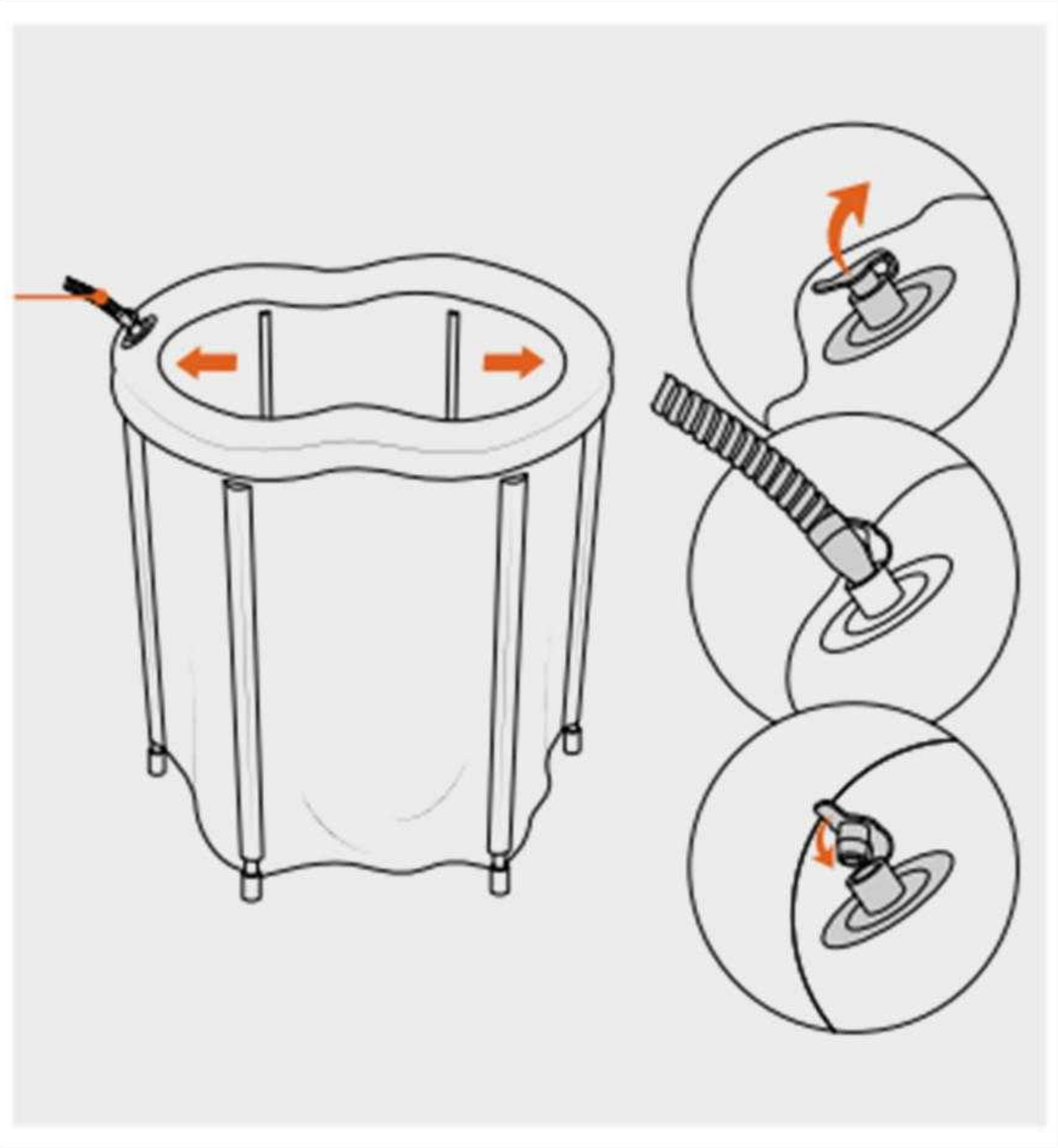


Decomposition diagram



Model: CT-01

Superior PVC has durable and strong thermal insulation performance, good corrosion resistance,heat resistance ,bending performance, long lifespan.



Circle, pull-up style tub  
Each unit size/mm:700\*700/588L





Model: CT-02

CT-02 is a fully inflatable bathtub, we use double-action high pressure hand pump, which can be filled up faster in a few minutes and saving time greatly.

The thickness of the tub is 80mm after filling, and the cover is also 80mm thick inflatable full-cover cover, with a strap completely connected to the tub, which can completely prevent other things from entering the tub. The bathtub can hold 300 liters of water, which allows people to be completely immersed in it and get relaxed.





### Decomposition diagram

The diagram shows a white inflatable container with a hinged cover. The cover is labeled 'Cover'. The container has a 'Fixed buckle' on its side. The interior is lined with a 'liner'. There are three ports on the side: a 'Water IN' port (green), a 'Water OUT' port (red), and an 'Inflatable port' (black). The 'Inflatable port' is labeled 'Inflatable port'. The 'Water IN' port is labeled 'Chiller outlet'. The 'Water OUT' port is labeled 'Chiller water intake'.

Cover

Fixed buckle

liner

Water IN

Chiller outlet

Water OUT

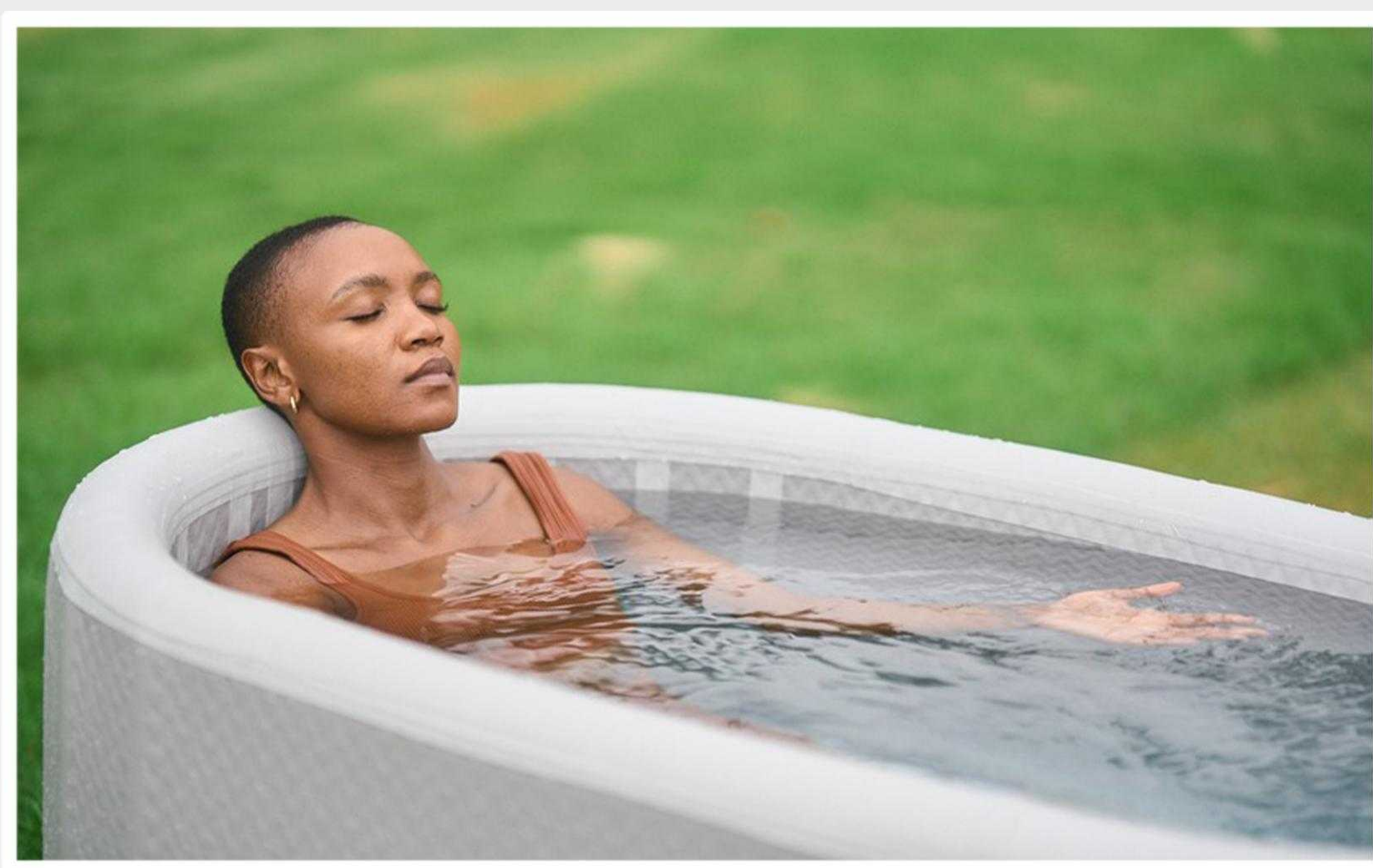
Chiller water intake

Inflatable port

## Model: CT-02

We also have a water inlet and outlet, which is perfectly suited to our chiller(can cooling or heating), making it very convenient to take a bath.

It also supports logo customization, with a printable area of 950mm\*550mm, which allows your logo to be perfectly displayed and impresses people with your brand!

A photograph of a woman with short dark hair, wearing a brown tank top, relaxing in a white inflatable bathtub. She is lying back with her eyes closed, and her arms are resting on the edge of the tub. The bathtub is filled with water and is set outdoors on a green lawn. The background is a blurred green field.

inflatable bathtub

Each unit size/mm:L1500\*W700\*H700

We also have a water inlet and outlet, which is perfectly suited to our chiller (can cooling or heating), making it very convenient to take a bath.

It also supports logo customization, with a printable area of 950mm\*550mm, which allows your logo to be perfectly displayed and impresses people with your brand!





Model: CT-03

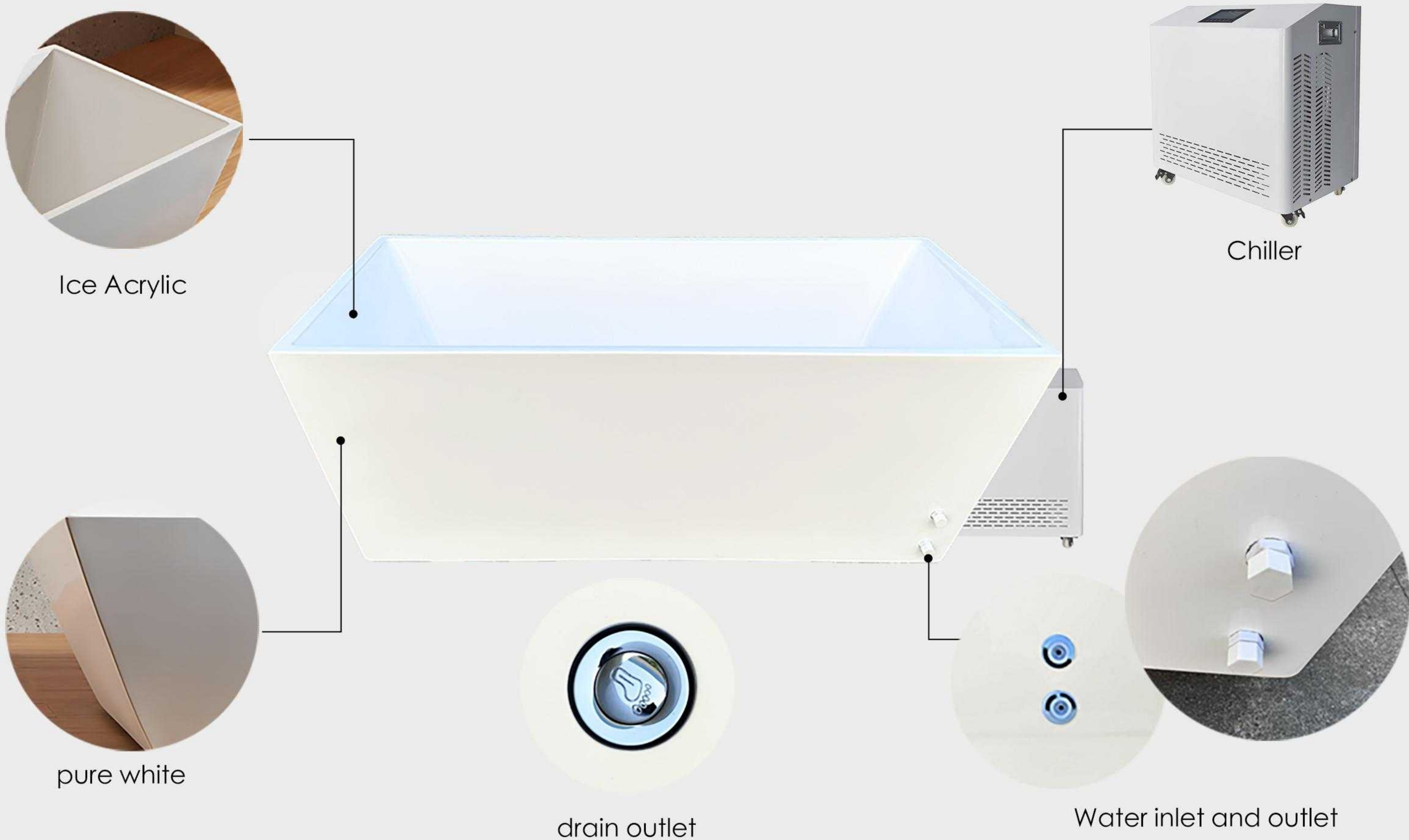
The cold plunge is made of acrylic, which can be use with a chiller conviniently and give you cold, clean water whenever you want it. Sports medicine has utilized cold water therapy for years which is to help the active recovery of your muscles. Cold plunge has also shown the ability that increase your baseline dopamine, the molecule in our brain and body that is linked to motivation.

The plunge is safe for indoor and outdoor use. It has a outletand inlet. When you turn it on and set the temperture at 39F degrees. After a few hours, get ready to change your life!



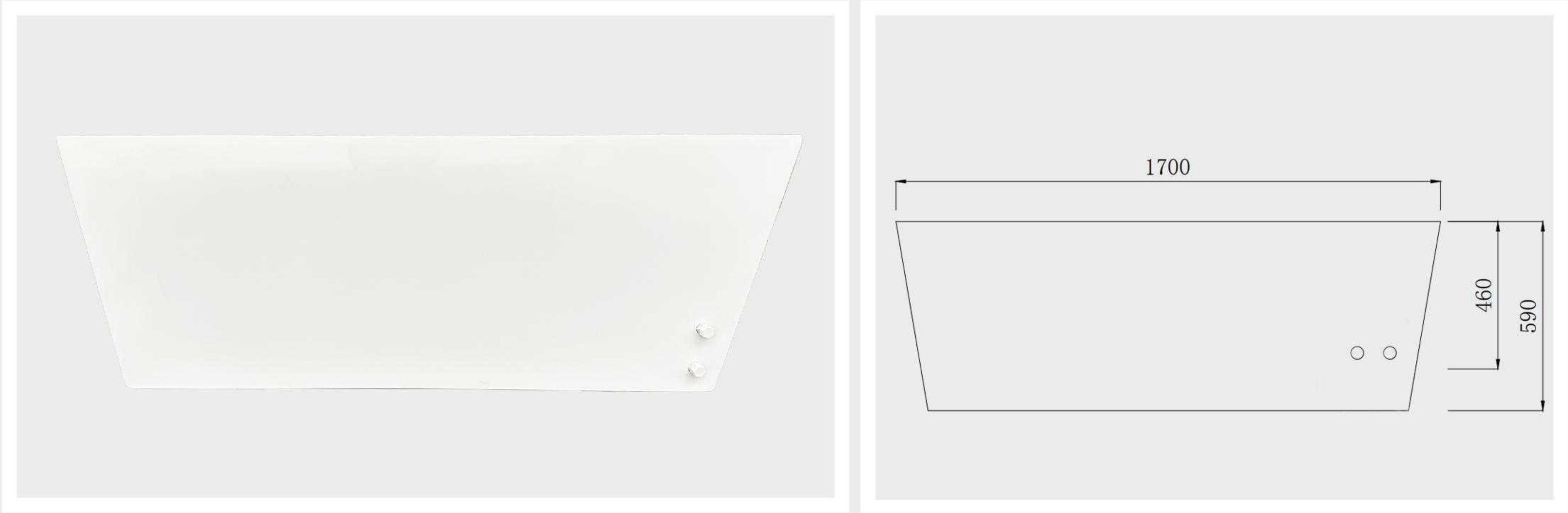


Decomposition diagram



Model: CT-03

Our cold plunge tub uses a chiller which has powerful cooling and heating, which has a filtration and a sanitation to give you perfectly chilled, clean water whenever you want it without ice needed. The cold plunge is designed for indoor and outdoor use. Just fill your plunge with a hose and set your temp (as low as 39° F), then get ready to change your life.



Standard size:  
External Dimensions:1700\*800\*600mm(LWH)





Model: CT-06

The tub is lined with 304 stainless steel and the exterior is made of hemlock, exuding the warmth of the fragrant natural wood that complements the delicate 304 stainless steel lining.

The tub comes with a step that can be placed in a suitable position according to personal preference. The design is both functional and beautiful, enhancing comfort and style in your bathroom.



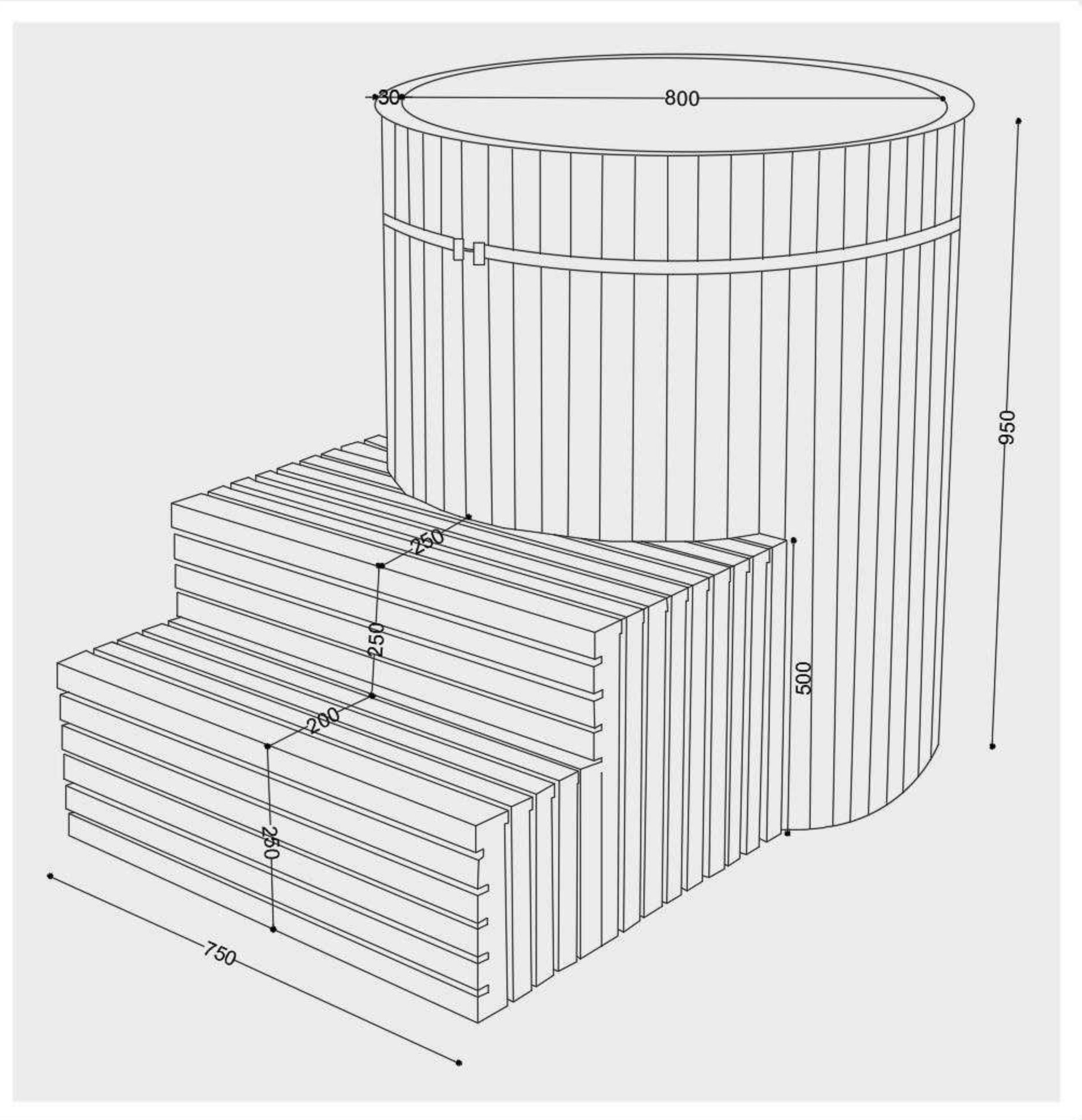


Decomposition diagram



Model: CT-06

Designed for one person, it has a diameter of 800mm and is submerged in a depth of 950mm, giving a comfortable bathing experience. Each soak is like being immersed in a quiet time.



Standard size:  
Tank Dimensions: Ø800 mm\* H850 mm  
External Dimensions: Ø860 mm\* H950 mm



## Model: CT-09

This bathtub stands out with its elegant, practical, and unique design. It is made of WPC panels and has a PVC liner or a Red Cedar 304 stainless steel liner, showcasing high quality and durability. With dimensions of 1000 \* 700mm and a depth of 1000mm, it provides spacious space for a comfortable soaking experience.



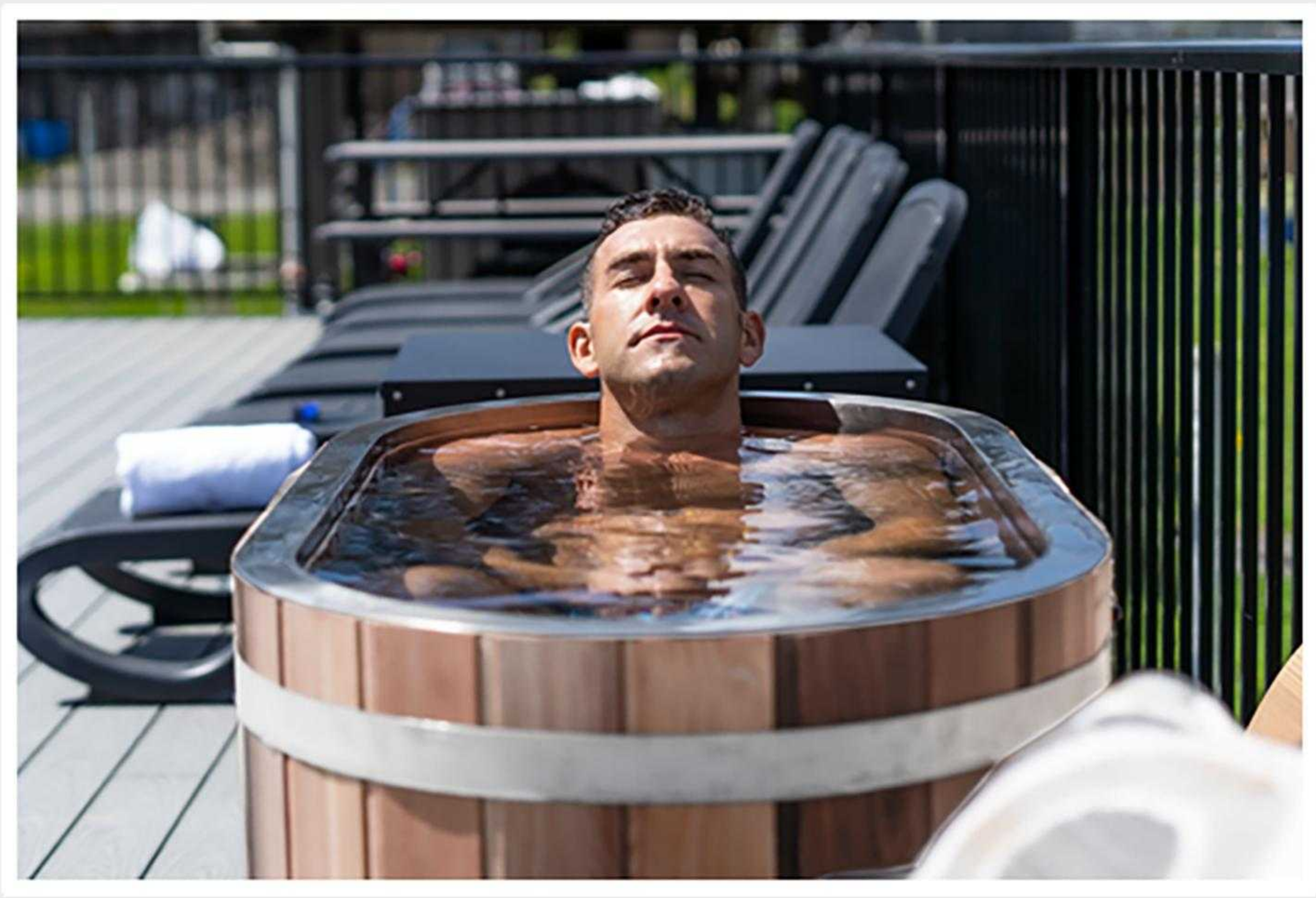


Decomposition diagram



Model: CT-09

This tub comes with an insulation cover and water inlet/outlet, making it convenient to use with our cold water machine (with cooling and heating functions) or a heating stove.



Standard size:  
Tank Dimensions:900\*700\*900mm (LWH)  
External Dimensions:1000\*700\*1000mm (LWH)





## Model: CT-12

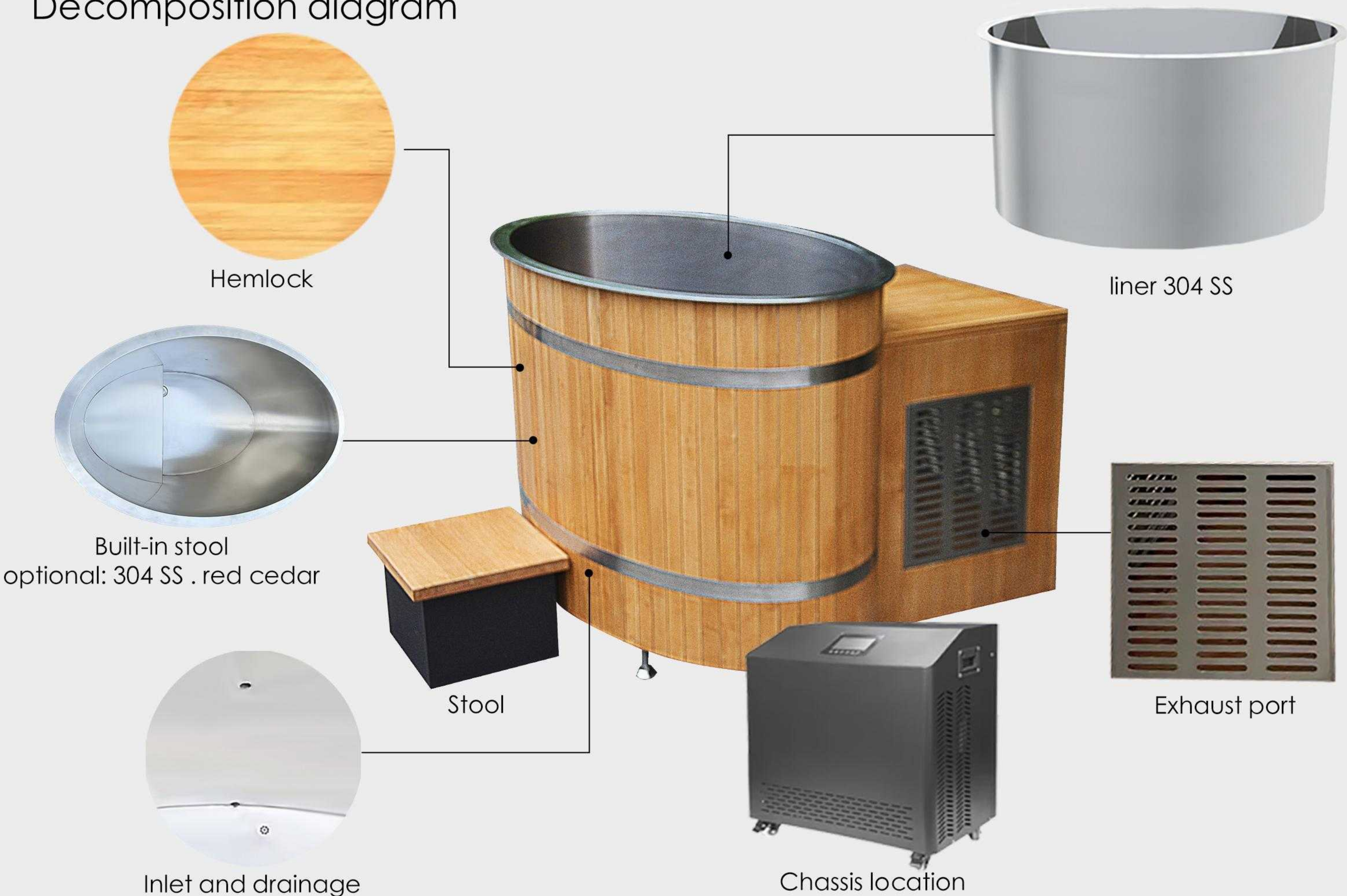
Simple and elegant apprance. It has four feet that you can move it to anywhere. Excellent stainless steel craftsmanship, not only for the inner tub but also for vent, you can put any chiller inside.

Drain water like a flower. Finished product. You can link any chiller or not.

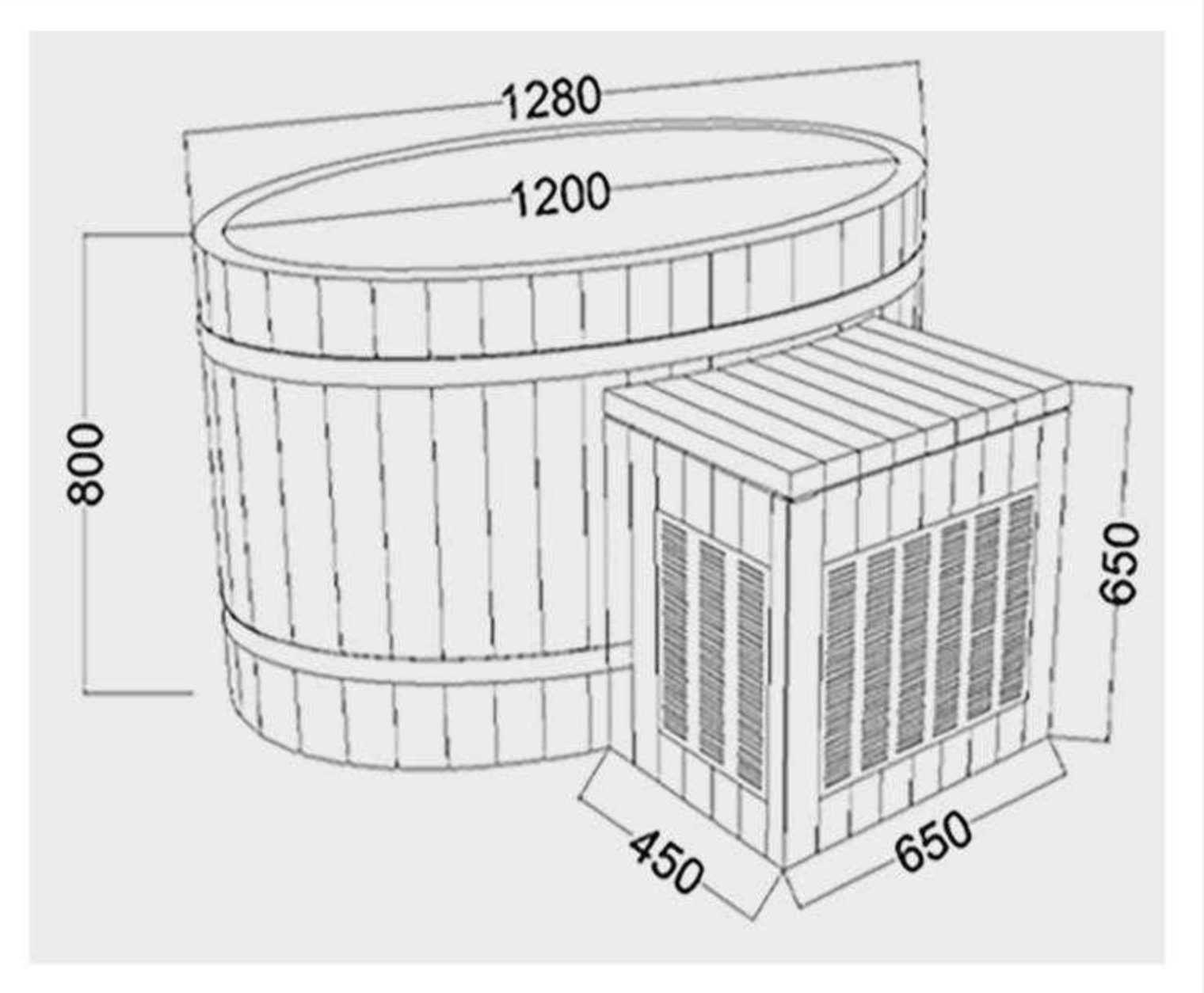




Decomposition diagram



Model: CT-12



Optional: red, blue



Standard size:  
A. External Dimensions:1280\*800\*800mm (LWH)  
B. External Dimensions:1580\*880\*850mm (LWH)

Power	350w~2000w	ozonator	1	vent	1
Loading capacity	24 units	drainage	1	water return outlet	1
Pumps	1* 0.5HP	decorating cabinet	1	thermo cover	1
Seat capacity	1 Person	compressor	1* 1.5Kw	compressor	1
Voltage type	16A	compression pump	1*0.5H	formed ABS tray	1
plug&play wire	1*5m	oxidation-resisting steel frame	1	filter cartridge	1
				ozonator	1





## Model: CT-13

The cold plunge is typically made from high-quality acrylic, which provides a smooth and durable surface for water containment. Acrylic is favored for its resistance to chemicals and UV radiation, ensuring the plunge maintains its appearance and functionality over time.

**Spacious and Comfortable:** With a generous rectangular, our cold water bathtub offers ample space for individuals or to enjoy a refreshing dip. The comfortable and ergonomic design ensures a soothing and relaxing experience with every use.

**Hygienic and Low-Maintenance:** The acrylic tank's smooth surface is easy to clean and maintain, while the plastic wood shell provides an attractive, low-maintenance solution. Proper water treatment and filtration systems ensure hygienic water quality at all times.





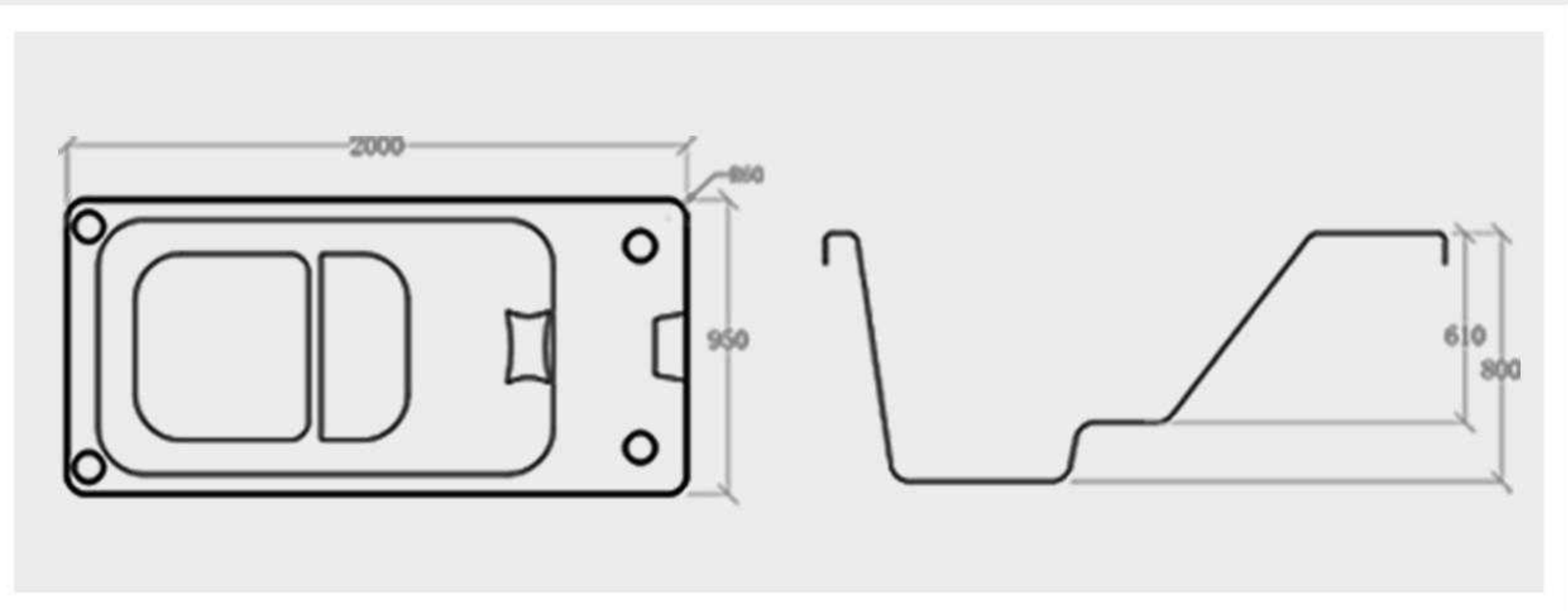
Decomposition diagram



Model: CT-13



Luxurious and Durable Design: Our cold water bathtub features a sleek and modern acrylic tank with a premium plastic wood shell cylinder body. This combination not only adds a touch of luxury to any spa or wellness space but also ensures exceptional durability, with the ability to withstand constant exposure to water and harsh environments.



Standard size:  
2000\*950\*900mm (LWH)  
color:



Power	350w~2000w	ozonator	1	vent	1
Loading capacity	24 units	drainage	1	water return outlet	1
Pumps	1* 0.5HP	decorating cabinet	NA	thermo cover	1
Seat capacity	1 Person	hydra massage jets	1	compressor	1
Material	Chinese Acrylic	compressor power	1* 1.5Kw	formed ABS tray	1
Voltage type	16A	circulation pump	1*0.5H	filter cartridge	1
plug&play wire	1*5m	oxidation-resisting steel frame	1	ozonator	1





Model: CT-14

CT-14 is made of metal and red cedar. The appearance is coated with black anti-rust coating, which has a high-end and atmospheric appearance. Complete with black insulated cover and matching red cedar stool.

Our chiller series choose international famous brands, and the cooling effect can reach the lowest temperature of 3 degrees Celsius.

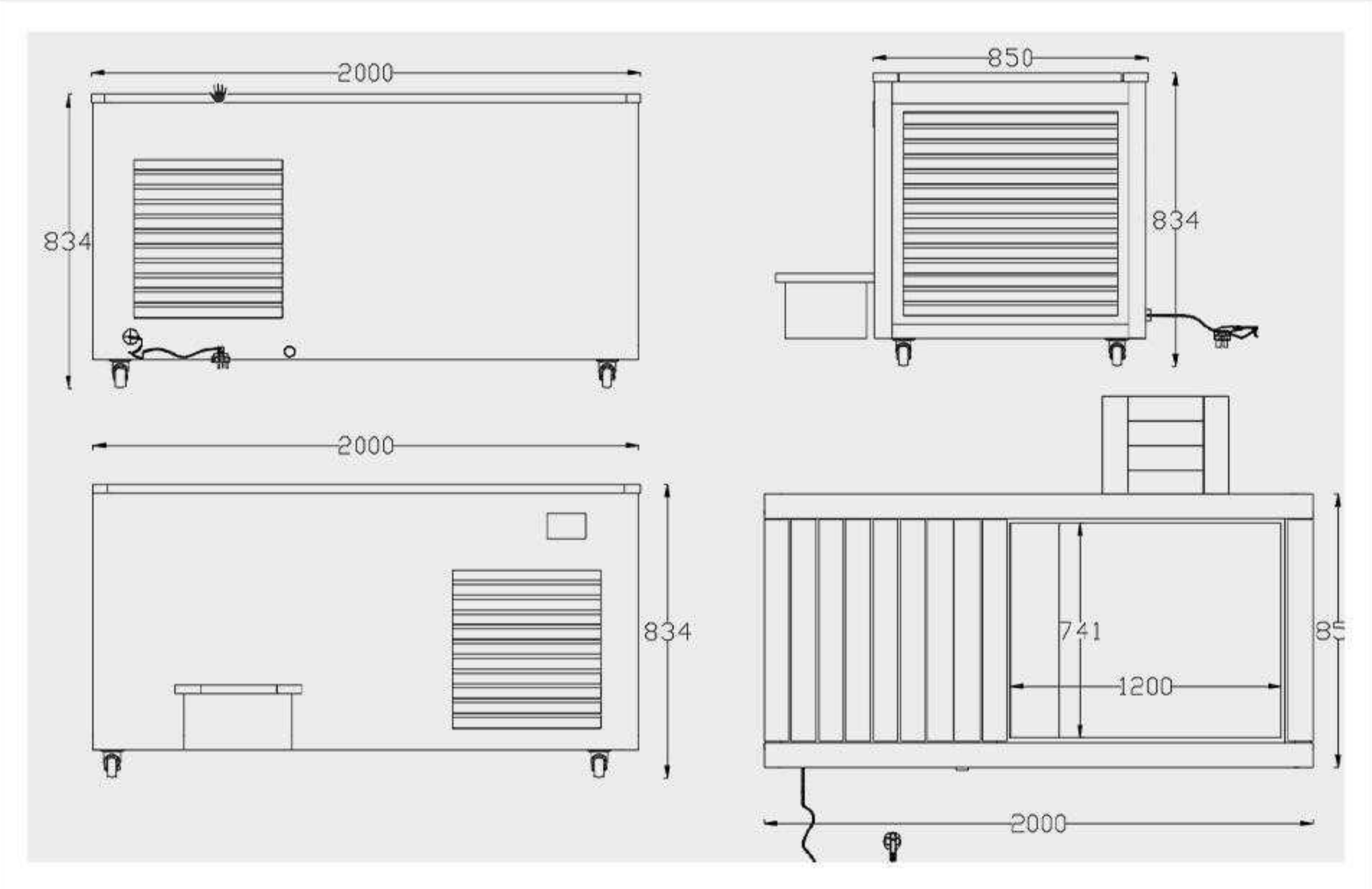
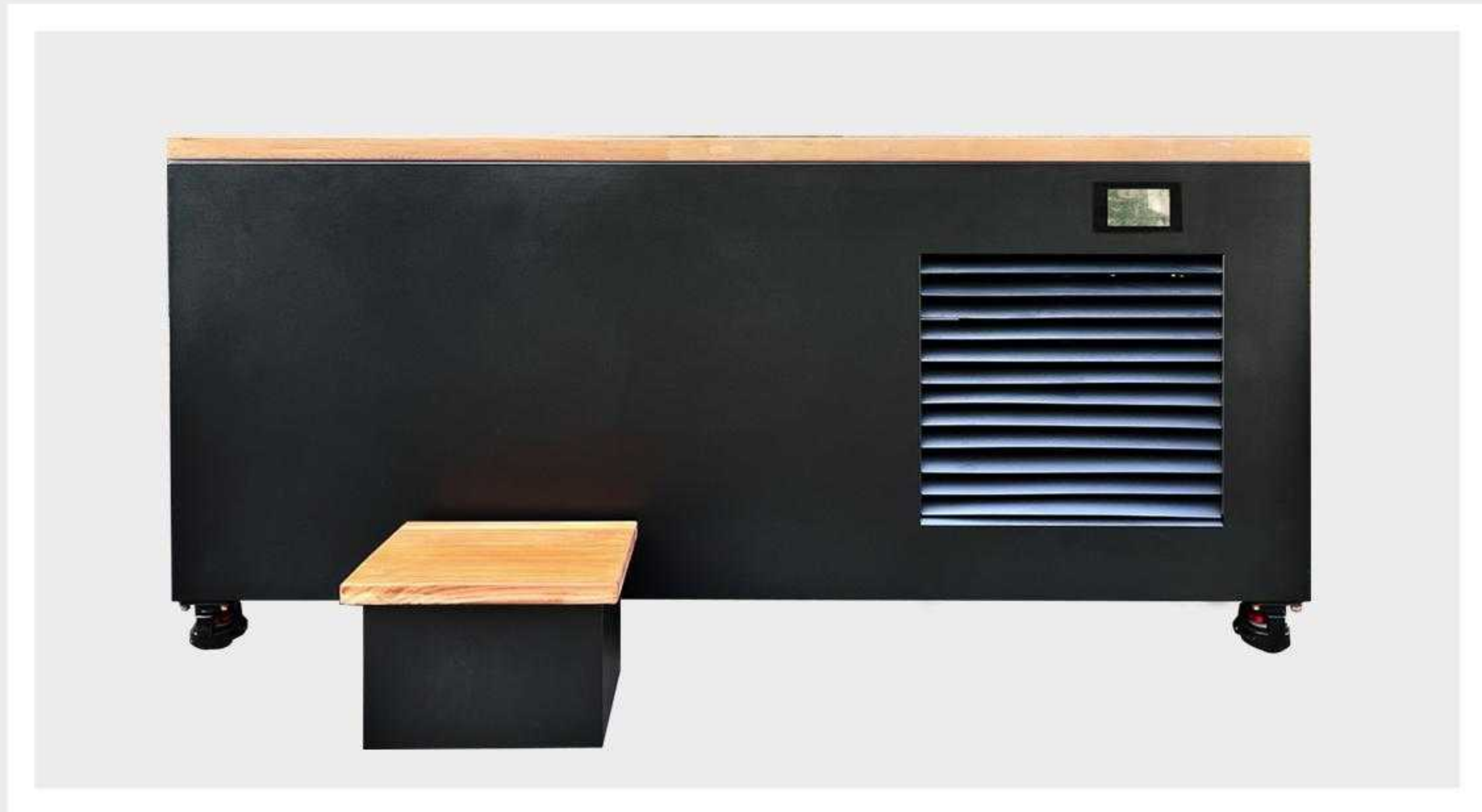




Decomposition diagram



Model: CT-14



Standard size:  
Tank Dimensions:1200\*741\*700mm(LWH)  
External Dimensions:2000\*850\*835mm(LWH)

Optional:black,white



CT14-01



CT14-02

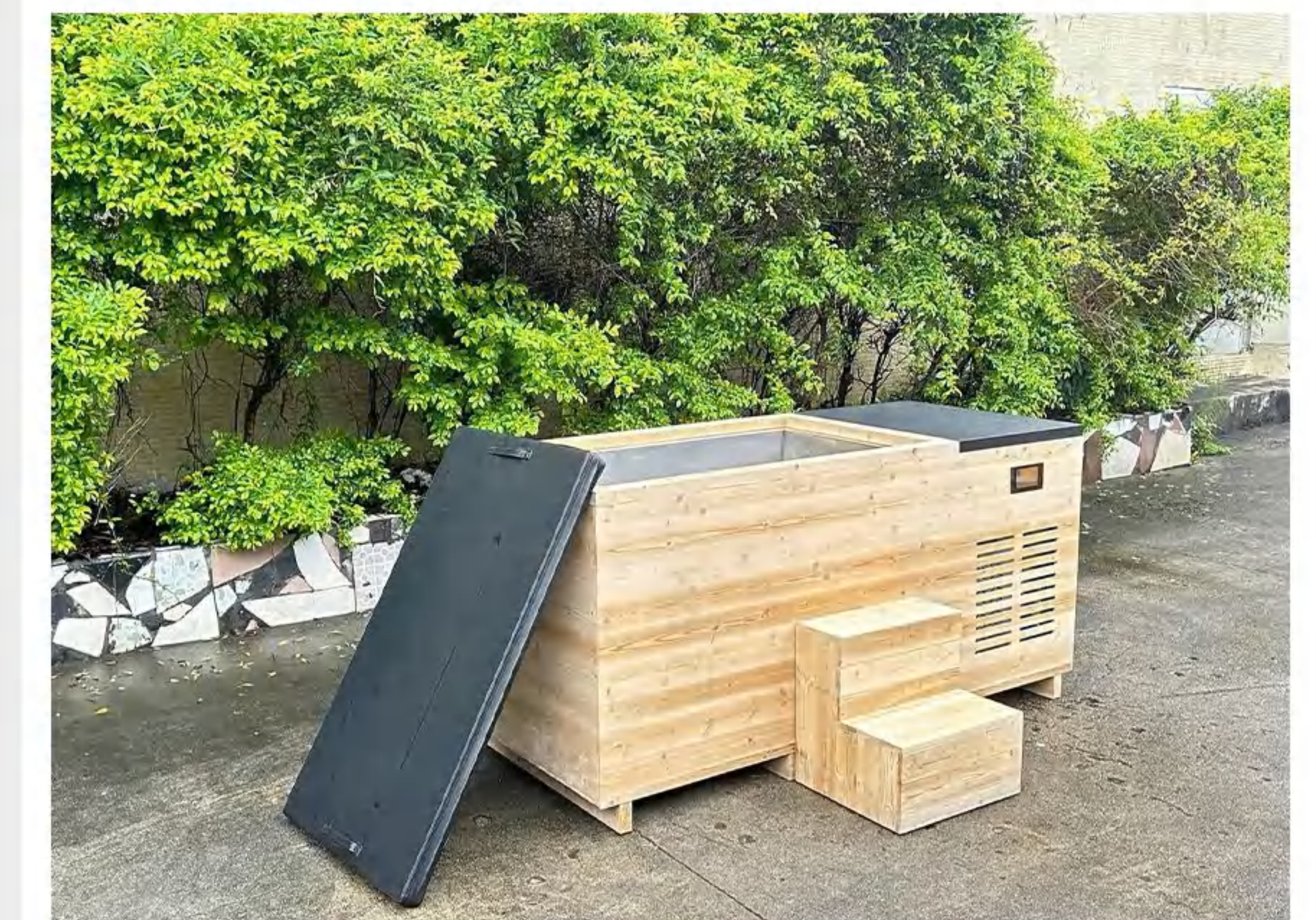
Power	350w~2000w	ozonator	1	vent	1
Loading capacity	24 units	drainage	1	water return outlet	1
Pumps	1* 0.5HP	decorating cabinet	1	thermo cover	1
Seat capacity	1 Person	compressor	1	compressor	1
Voltage type	16A	compressor power	1* 1.5Kw	formed ABS tray	1
plug&play wire	1*5m	circulation pump	1*0.5H	filter cartridge	1
		oxidation-resisting steel frame	1	ozonator	1



## Model: CT-15

Features a sleek SS interior tub with a beautiful smoothy finish. Made of high quality material thermo wood. The bathtub combines the durability of 304 SS liner with the natural elegance of wood.

Our chiller series choose international famous brands, and the cooling effect can reach the lowest temperature of 3 degrees Celsius.





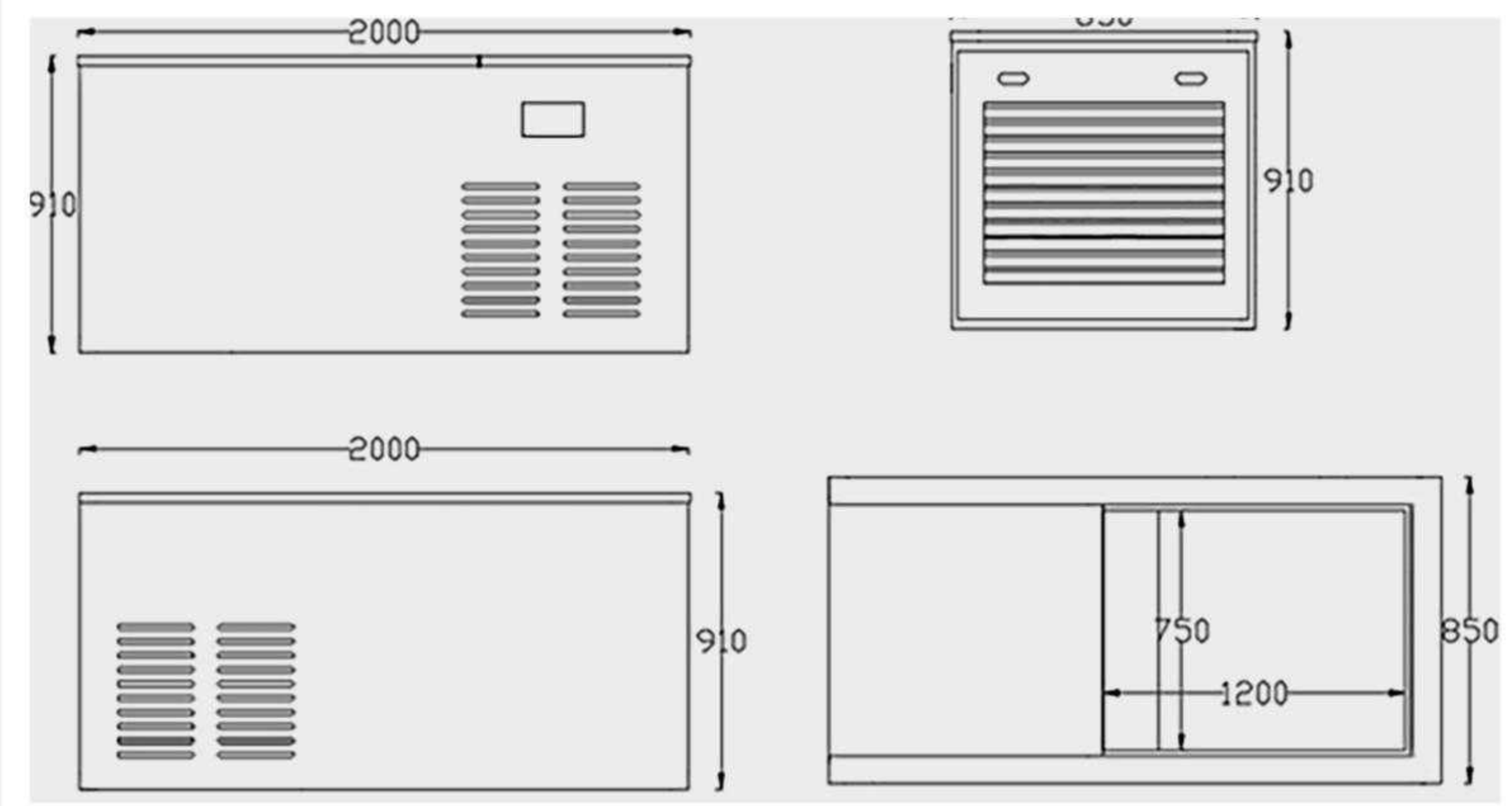
Decomposition diagram



Model: CT-15



Standard size:  
External Dimensions:2000\*850\*910mm (LWH)



Power	350w~2000w	ozonator	1	vent	1
Loading capacity	24 units	drainage	1	water return outlet	1
Pumps	1* 0.5HP	decorating cabinet	1	thermo cover	1
Seat capacity	1 Person	compressor	1* 1.5Kw	compressor	1
Voltage type	16A	compressor power	1*0.5H	formed ABS tray	1
plug&play wire	1*5m	circulation pump	1	filter cartridge	1
		oxidation-resisting steel frame	1	ozonator	1





Model: CT-16

Features a sleek stainless steel interior with a beautiful smooth finish. Made of high quality material thermo wood, this bathtub combines the durability of 304 SS liner with the natural elegance of wood.

Our chiller series choose international famous brands, and the cooling effect can reach the lowest temperature of 3 degrees Celsius.





Decomposition diagram



Model: CT-16

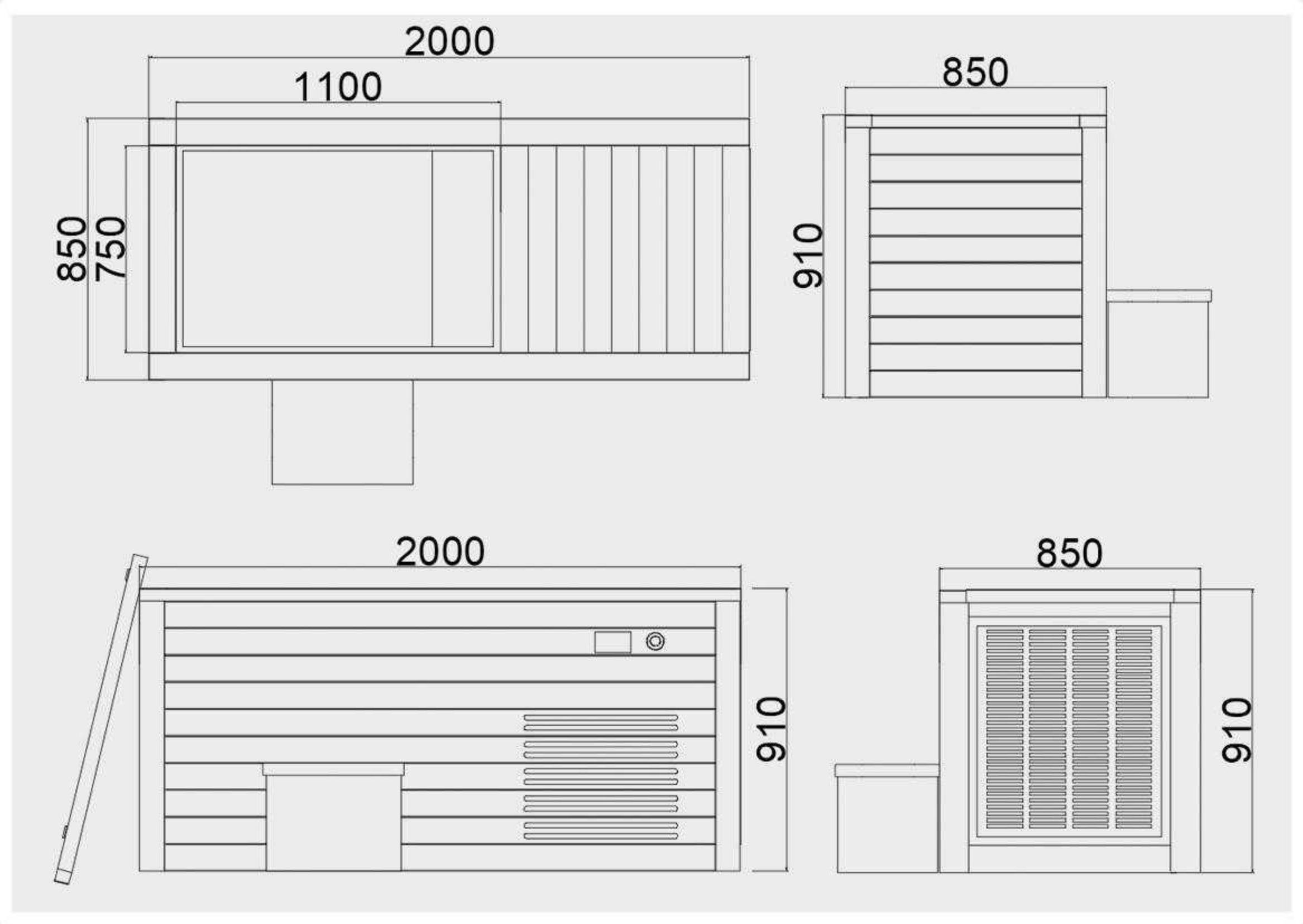


Standard size:  
External Dimensions:2000\*850\*910mm (LWH)



Standard size:  
External Dimensions:1600\*820\*900mm (LWH)

The overall appearance is made of red cedar, elegant and atmospheric. Enjoy the feeling of bathing in the forest.



Power	350w~2000w	ozonator	1	vent	1
Loading capacity	24 units	drainage	1	water return outlet	1
Pumps	1* 0.5HP	decorating cabinet	1	thermo cover	1
Seat capacity	1 Person	compressor	1* 1.5Kw	compressor	1
Voltage type	16A	compression pump	1*0.5H	formed ABS tray	1
plug&play wire	1*5m	oxidation-resisting steel frame	1	filter cartridge	1
				ozonator	1





## Model: CT-17

It is made from high quality 304 SS, 2.0 thick coating with the natural elegance of red cedar, which has WIFI control, LED light, filter, ozone generator. it has two seats with strong corrosion resistant and good performance and long lifespan.

You can choose 304 SS stainless steel (stainless steel) coating: durable; strong thermal insulation performance; good corrosion resistance; heat resistance; bending performance, long service life.





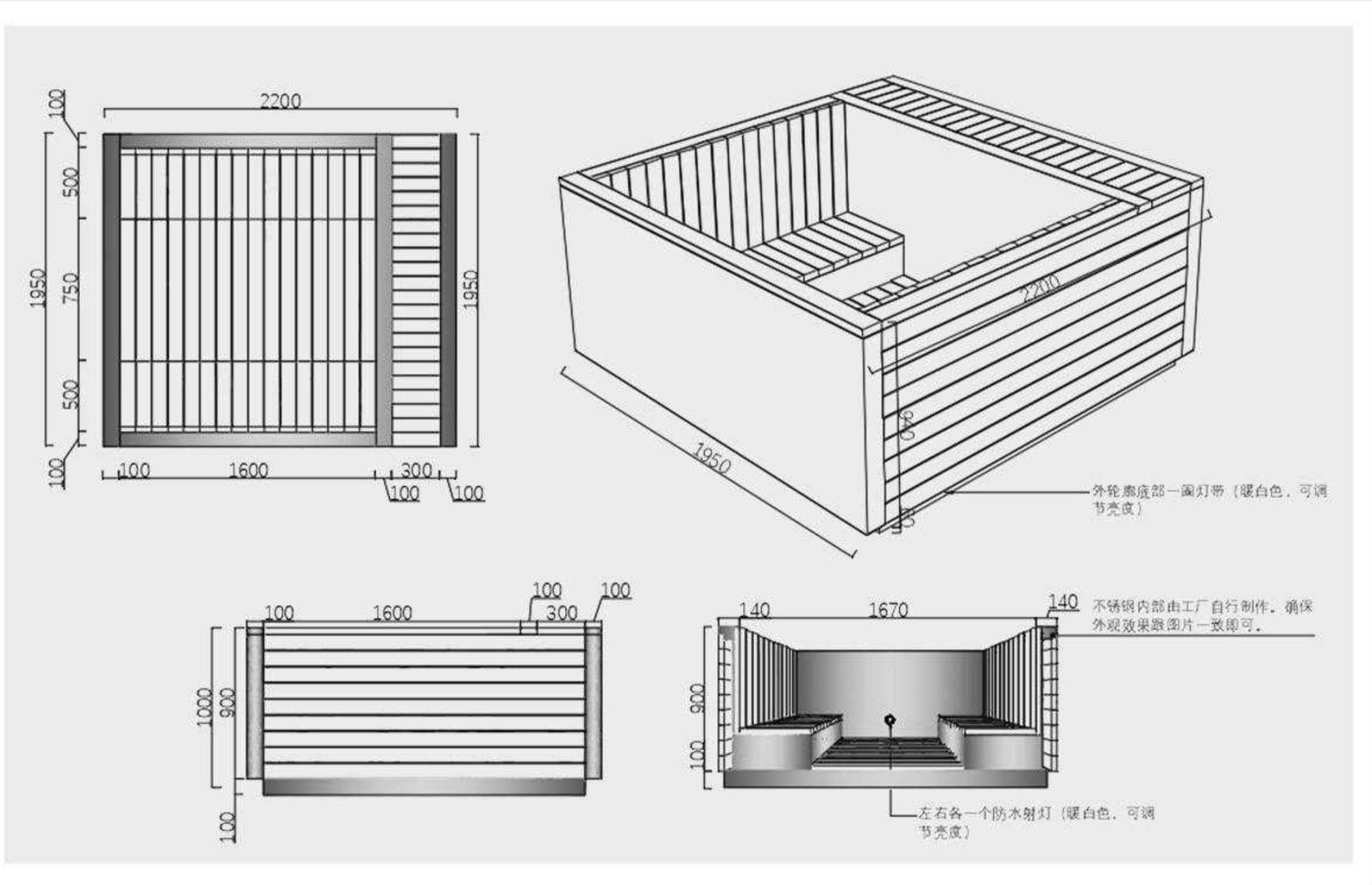
Decomposition diagram



Model: CT-17



Standard size:  
Tank Dimensions:1500\*1750\*900mm(LWH)  
External Dimensions:2200\*1950\*1000mm(LWH)



Power	350w~2000w	ozonator	1	vent	1
Loading capacity	24 units	drainage	1	water return outlet	1
Pumps	1* 0.5HP	decorating cabinet	1	thermo cover	1
Seat capacity	1 Person	compressor	1* 1.5Kw	compressor	1
Voltage type	16A	compressor power	1*0.5H	formed ABS tray	1
plug&play wire	1*5m	circulation pump	1	filter cartridge	1
		oxidation-resisting steel frame	1	ozonator	1



## Model: CT-18

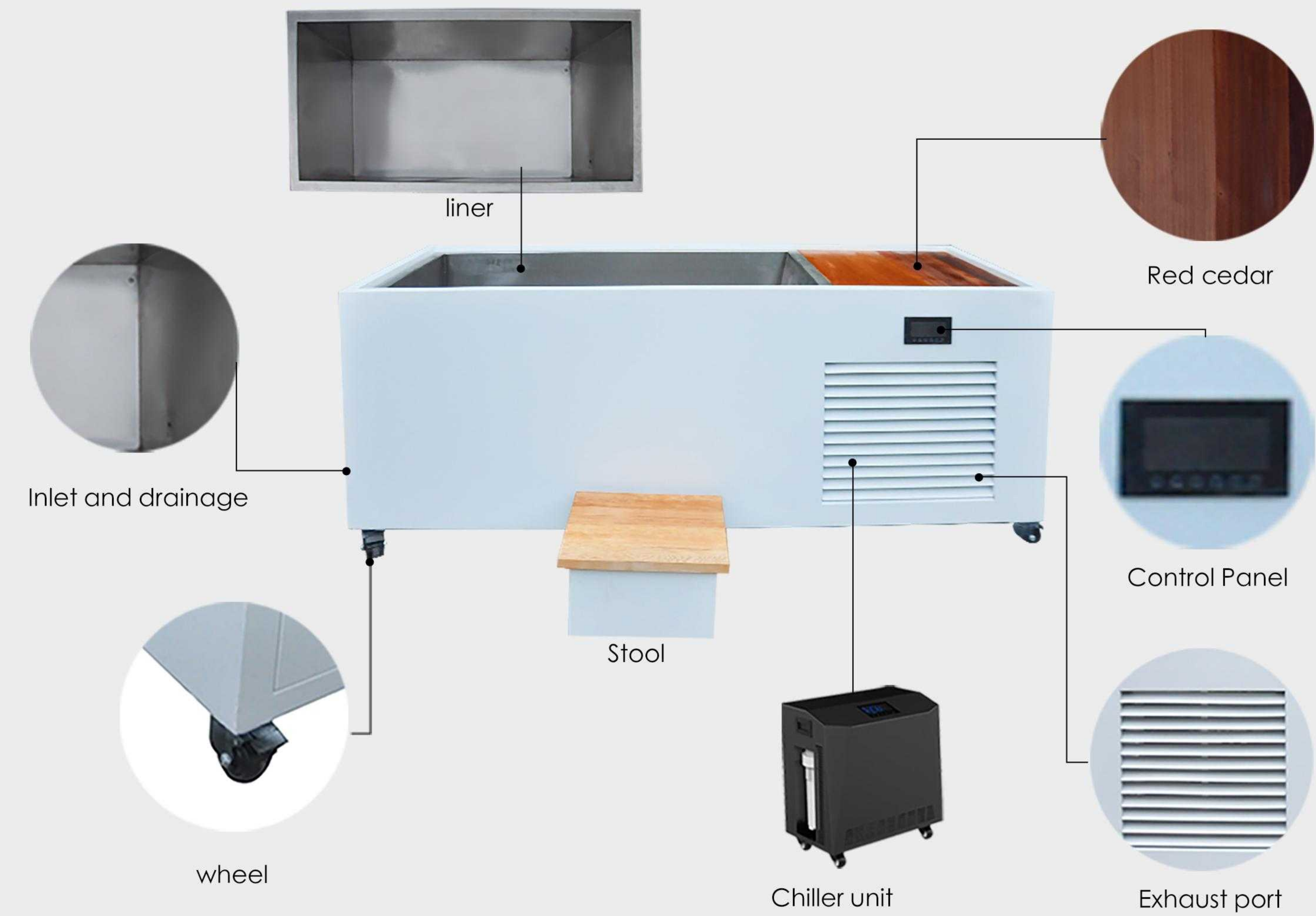
The CT-18 is made of SS 1.5 thick metal and red cedar. The exterior coated with white anti-rust coating gives it a high-end and atmospheric appearance. it is completed with black heat shield and matched red cedar stool.

Our chiller series choose international famous brands, and the cooling effect can reach the lowest temperature of 3 degrees Celsius.





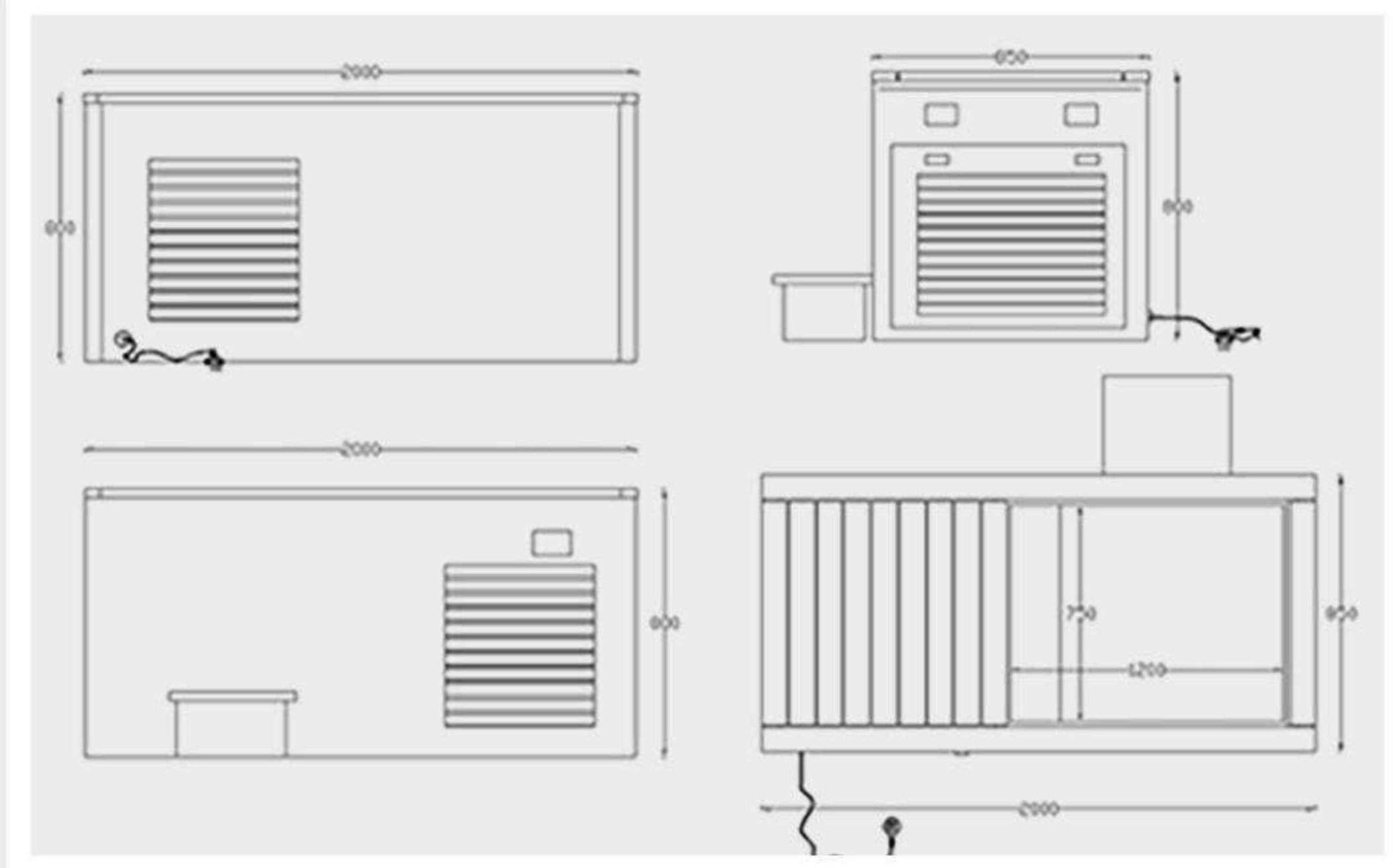
Decomposition diagram



Model: CT-18



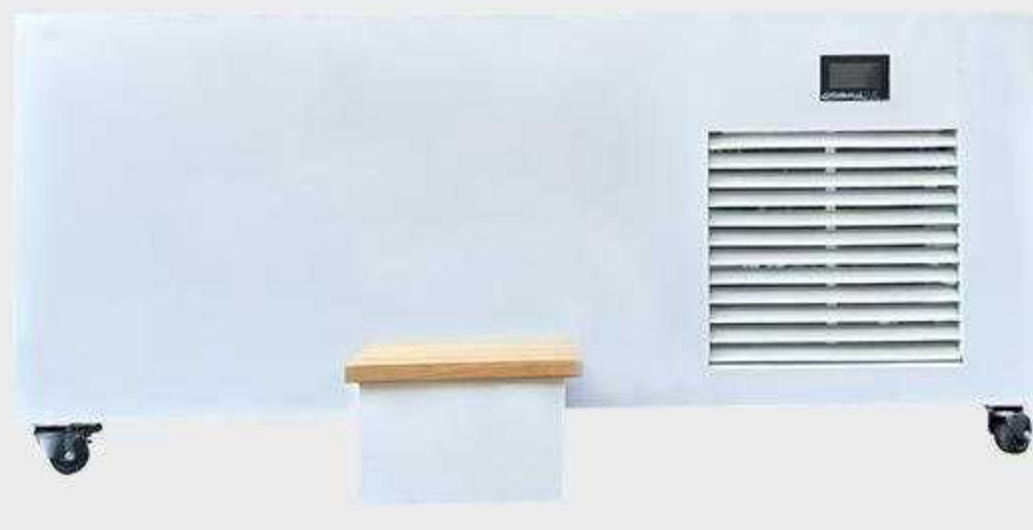
Standard size:  
Tank Dimensions:1200\*750\*700mm(LWH)  
External Dimensions:2000\*850\*800mm(LWH)



Optional:black,white



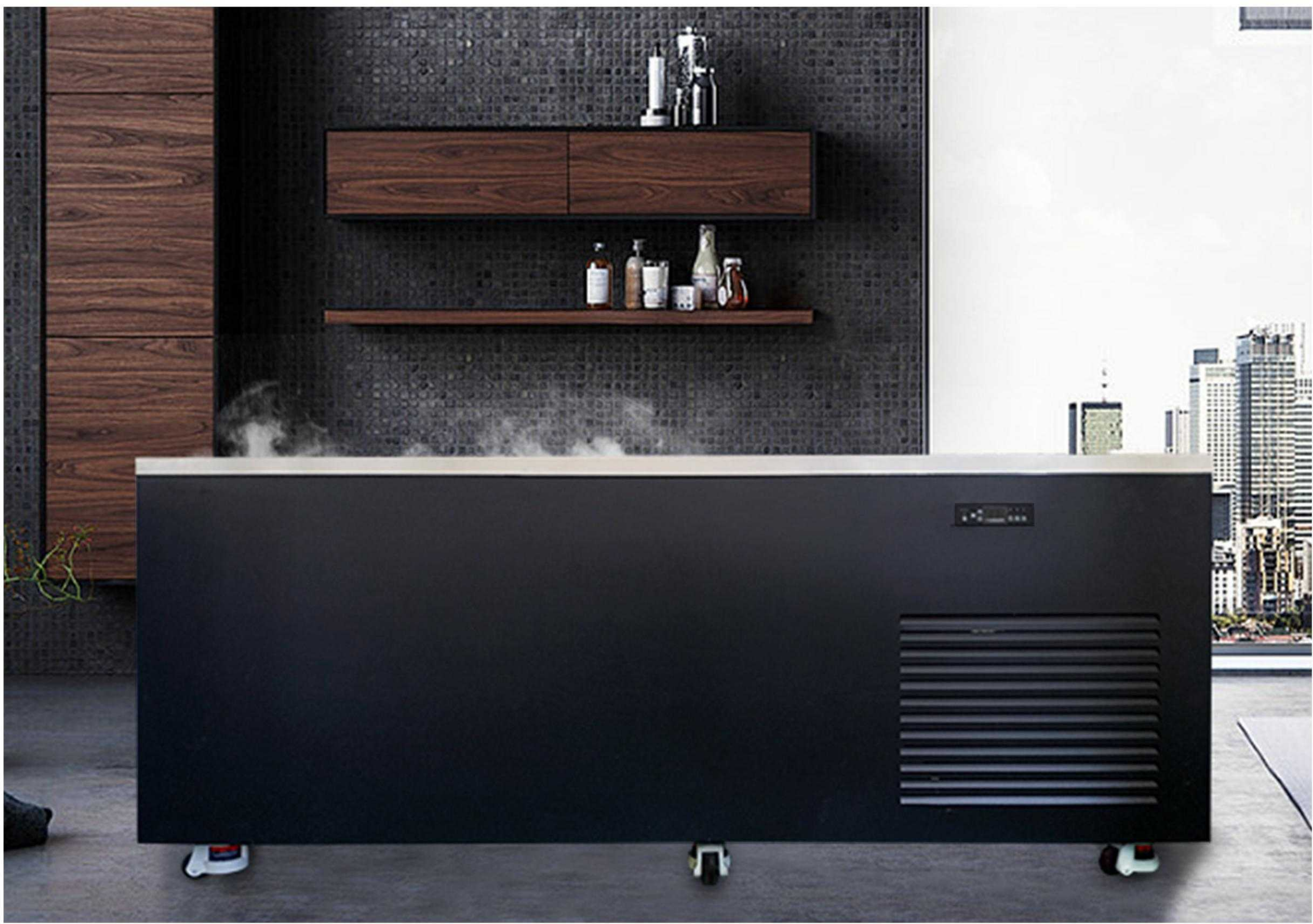
CT18-01



CT18-02

Power	350w~2000w	ozonator	1	vent	1
Loading capacity	24 units	drainage	1	water return outlet	1
Pumps	1* 0.5HP	decorating cabinet	1	thermo cover	1
Seat capacity	1 Person	compressor	1* 1.5Kw	compressor	1
Voltage type	16A	compression power	1*0.5H	formed ABS tray	1
plug&play wire	1*5m	circulation pump	1	filter cartridge	1
		oxidation-resisting steel frame	1	ozonator	1





## Model: CT-19

Bropool new technology direct ice bathtub hot and cold market hot selling ice water bathtub latest design cold plunge

Our ice-making bathtub features an exclusive technology that turns water into ice directly. It is unique in the market. it has filter, LED light and ozone generator. at the time, it has six wheels, which can guide you to anywhere to enjoy the cooling wonderful time and exciting screaming.





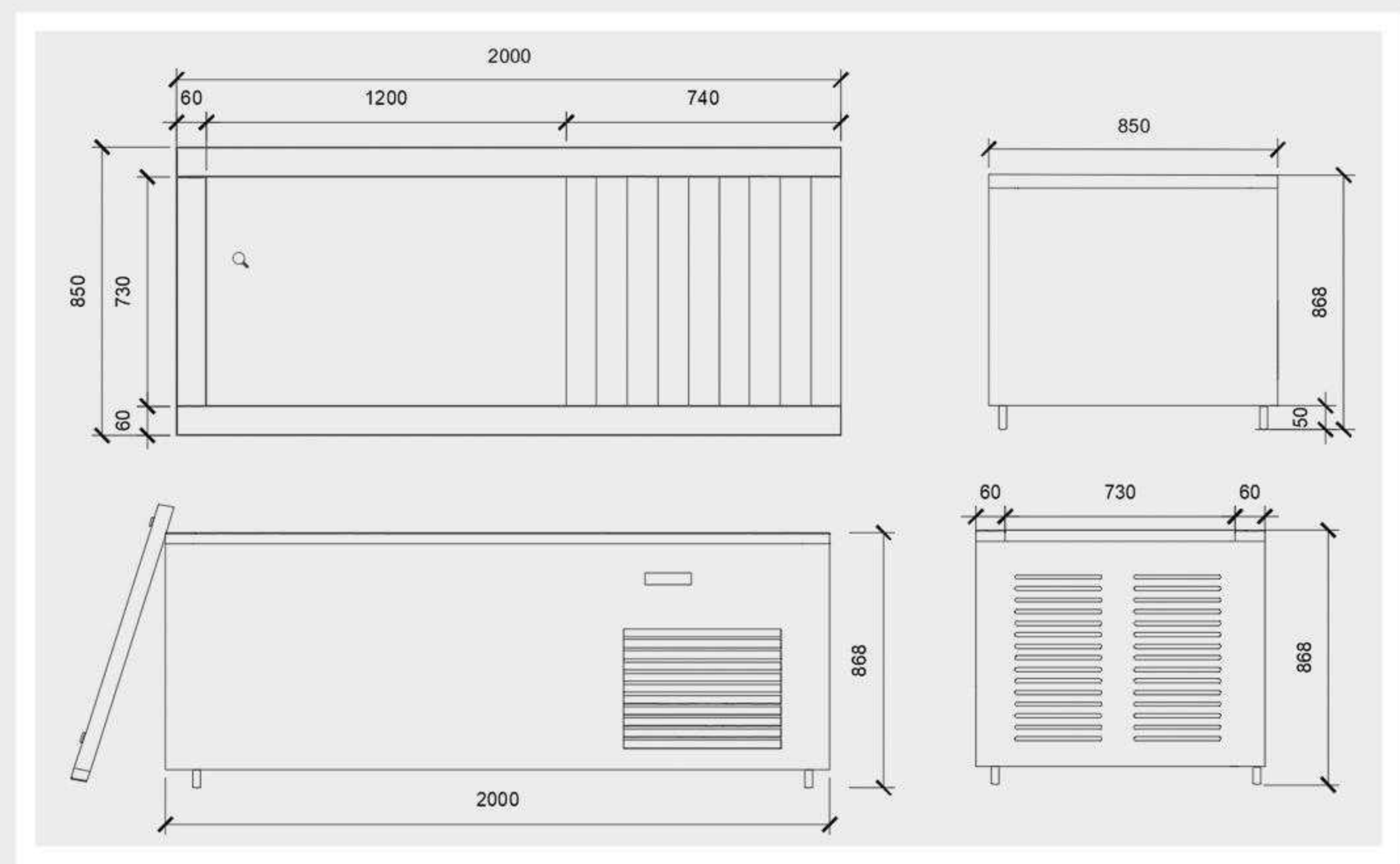
Decomposition diagram



Model: CT-19



Standard size:  
Tank Dimensions:1200\*730\*700mm (LWH)  
External Dimensions:2000\*850\*868mm (LWH)



Temperature 0°C to 8°C  
Lighting optional

Voltage type	16A
Loading capacity	12units/20GP 24units/40GP
plug&play wire	2m
ozonator	1

Available styles:



CT19-01

CT19-02